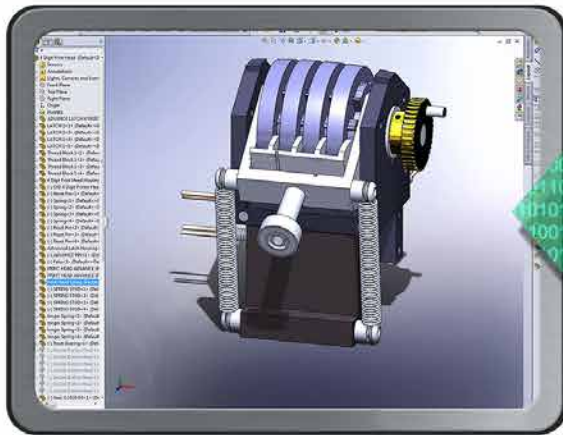




**“Real-Time BOM comparison,
2-Way data push, payback period of 6 months or less.”**

**SolidWorks
Enterprise PDM**



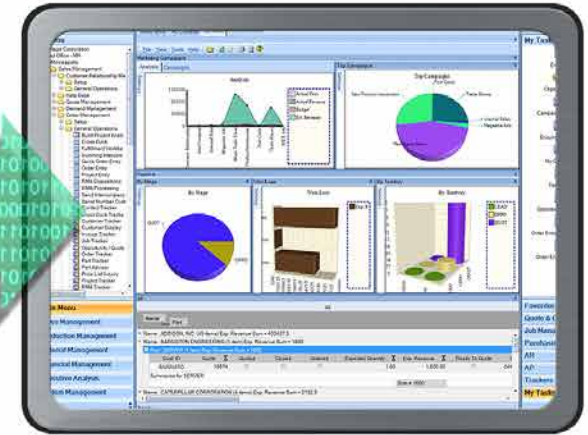
1. Engineer it

CADLink

No	Save	Part Number	Revision	Part Description
1	<input checked="" type="checkbox"/>	TM00750	000	SH100 - 5 - M - ASSEMBLY
1.1	<input checked="" type="checkbox"/>	TM00779	000	SI LED 5 ASSEMBLY
1.1.1	<input checked="" type="checkbox"/>	SDC00192	000	White Rebel LEDs, 20mm Tri-Star Base-7
1.1.2	<input checked="" type="checkbox"/>	SDC00198	000	Circle 22" Frosted TriLED Optic with Hdk
1.1.3	<input checked="" type="checkbox"/>	TM00959	000	SI L.E.D. PLASTIC COVER
1.1.4	<input checked="" type="checkbox"/>	TM00584	000	SI LED BASE #6
1.2	<input checked="" type="checkbox"/>	TM00755	000	SH100 - 5 - M - INSIDE COVER
1.2	<input checked="" type="checkbox"/>	SDC00095	000	SH100 - GAS SPRING
1.3.1	<input checked="" type="checkbox"/>	TM00751	000	GAS SPRING SIDE 2
1.3.2	<input checked="" type="checkbox"/>	TM00752	000	GAS SPRING SIDE 1
1.3.3	<input checked="" type="checkbox"/>	TM00750	000	GAS SPRING ROD
1.4	<input checked="" type="checkbox"/>	TM00748	000	SH100 - 5 - M - FRAME
1.5	<input checked="" type="checkbox"/>	TM00754	000	GAS STRUT STAND OFF
1.6	<input checked="" type="checkbox"/>	TM00754	000	SHV1 BALL STUD
1.7	<input checked="" type="checkbox"/>	TM00767	000	SH100 - 5 - M - 300 - 2550
1.8	<input checked="" type="checkbox"/>	TM00762	000	SH100 - 5 - M - 300 - 2550
1.9	<input checked="" type="checkbox"/>	TM00761	000	SH100 - 5 - M - 310 - 2550
1.10	<input checked="" type="checkbox"/>	TM00763	000	SH100 - 5 - M - NO CAMERA 34 SIDE PL

2. Sync the BOM

ERP System



3. Build it

**QBuild
CORPORATION**

210 Telson Road
Markham Ontario | L3R 1E6 CANADA
Ph: 1 (905) 479-7811 | Fx: 1 (905) 479-2636
Web: www.QBuildSoftware.com

Our Partners



Solution
Partner



ORACLE
Validated Integration
JD Edwards
EnterpriseOne

ORACLE
E-BUSINESS SUITE

EPICOR

APTEAN

ECI M1™

= exact

PLEX
THE MANUFACTURING CLOUD



Bill of Material Changes

No	Save	Part Number	Revision	Part Description	Related Operation	Unit Qty	Units
1.1	✓	TM00738	000	SA100 - S - M - ASSEMBLY	0	1.0000	EA
1.1	✓	TM00739	000	SL LED ASSEMBLY	0	16.0000	EA
1.1	✓	SC000192	000	White Robot LEDs, 20mm Tri-Star Base-705mg700mA	0	1.0000	EA
1.1	✓	SC000158	000	Custom 3P Flathead Tri-LED Cyclic with Holder	0	1.0000	EA
1.1	✓	TM00559	000	SL LED PLASTIC COVER	0	1.0000	EA
1.1	✓	TM00554	000	SL LED BASE #2	0	1.0000	EA
1.2	✓	TM00755	000	SA100 - S - M - INSIDE COVER	0	2.0000	EA
1.3	✓	SC000095	000	SA100 - GAS SPRING	0	2.0000	EA
1.3	✓	TM00751	000	GAS SPRING SIDE 2	0	1.0000	EA
1.3	✓	TM00752	000	GAS SPRING SIDE 1	0	1.0000	EA
1.3	✓	TM00750	000	GAS SPRING ROD	0	1.0000	EA
1.4	✓	TM00745	000	SA100 - S - M - FRAME	0	1.0000	EA
1.5	✓	TM00746	000	GAS STRUT STAND OFF	0	4.0000	EA
1.6	✓	TM00744	000	SPW1 BALL STUD	0	4.0000	EA
1.7	✓	TM00767	000	SA100 - S - M - 300 - 2550	0	1.0000	EA
1.8	✓	TM00762	000	SA100 - S - M - 350 - 2550	0	6.0000	EA
1.9	✓	TM00761	000	SA100 - S - M - 310 - 2550	0	1.0000	EA
1.10	✓	TM00763	000	SA100 - S - M - NO CAMERA 34 SIDE PLATE	0	1.0000	EA
1.11	✓	TM00766	000	SA100 - S - M - NO CAMERA 12 SIDE PLATE	0	1.0000	EA
1.12	✓	TM00746	000	SA100 - S - M - CAMERA 34 SIDE PLATE	0	1.0000	EA
1.13	✓	TM00768	000	SA100 - S - M - CAMERA 12 SIDE PLATE	0	1.0000	EA
1.14	✓	TM00744	000	SA100 - S - M - TOP COVER	0	2.0000	EA
1.15	✓	TM00756	000	SA100 - S - M - BUSHING	0	2.0000	EA
1.16	✓	TM00773	000	NAME PLATE	0	1.0000	EA
1.17	✓	TM00772	000	SA100 - S - M - BOTTOM COVER	0	2.0000	EA
1.18	✓	TM00769	000	SA100 - S - M - DOWEL PIN	0	2.0000	EA
1.19	✓	TM00749	000	SA100 - S - M - BEARING PAD	0	8.0000	EA
1.20	✓	RC00132	000	323 CLAMP PULL-ACTION	0	1.0000	EA
1.21	✓	TM00740	000	SA100 - S - M - SIDE COVER	0	2.0000	EA

Highly visual, intuitive user interface with indented exploded BOM view and thumbnail image. Colour highlighting lets you know which fields require your attention.

Resolve Discrepancies

SA100 - GAS SPRING	CAD Description : SA100 - GAS SPRING	ERP Description : SSC9-8-090-255-600N	CADLink Description : SA100 - GAS SPRING
GAS SPRING SIDE 2			1000
GAS SPRING SIDE 1			1000
GAS SPRING ROD			1000

Discrepancies between CAD and ERP are highlighted, allowing you to select or enter the correct data.

Operations

Seq	Type	Work Center	Process ID	Process Description	Qty Per Assm	Prod Std Factor	Prod Site
10	In House	MFLD	MFLD	Welding	1	Hours/Piece	2
20	In House	WVLCen	WVLCen	Drill	14	Minutes/Piece	5
30	In House	SPN	SPN	Spinning	1	Hours/Piece	5
40	In House	SPDT	SPDT	Spot Welder	5	Hours/Piece	1
50	In House	SUB	SUB	Subcontract	14	Minutes/Piece	5
60	In House	TRMREA	TRMREA	Thread Ream	1	Hours/Piece	1
70	In House	TRMREA	TRMREA	Thread Ream	1	Hours/Piece	1
80	In House	TUB	TUB	Tubing	1	Hours/Piece	1
90	In House	TURN	TURN	Turning	1	Hours/Piece	1

Assigning ERP Operation is easy. Simply select work center from a drop-down list.

Access ERP Data

Part	Description	Material	Quantity	Unit	Date
CR50 0360480120	CR Steel Sheet 0.0360480120"	EA	1	EA	Nov 22 2000 12:0
CR50 0360480120	CR Steel Sheet 0.0360480120"	EA	1	EA	May 16 2014 12:0
CR50 0480480120	CR Steel Sheet 0.0480480120"	EA	1	EA	Nov 7 2000 12:0
CR50 0480480120	CR Steel Sheet 0.0480480120"	EA	1	EA	May 20 2014 12:0
CR50 0600480120	CR Steel Sheet 0.0600480120"	EA	1	EA	Nov 9 2000 12:0
CR50 0160480120	CR Steel Sheet 0.0160480120"	EA	1	EA	Nov 9 2000 12:0
CR50 0500480120	CR Steel Sheet 0.0500480120"	EA	1	EA	Nov 9 2000 12:0
SS 304 0480480120	SS 304 Sheet 0.0480480120"	EA	1	EA	Nov 9 2000 12:0
SS 304 0600480120	SS 304 Sheet 0.0600480120"	EA	1	EA	Nov 12 2000 12:0

CADLink's direct integration allows you to access ERP data such as Product Group, Part Class, and Raw Material Part Data directly from the CADLink interface.

Features

- Real-time, direct, two-way link with ERP
- Automated, single-step BOM push
- View BOM change summary
- Push Revision to ERP and CAD
- Export Excel and PDF files
- Notification for errors and missing fields

Benefits

- Eliminate manual data entry
- Cut design cost
- Improve data consistency
- Improve information flow
- Increase data accuracy
- Reduce cycle time



Request a Demo Today!
www.QBuildSoftware.com
info@qbuildsoftware.com



ECN Manager software optional for an integrated engineering change process.

Integration with PLM and PDM systems of your choice available upon request.

“ Allow engineering teams to focus on what they do BEST: **Engineering!** ”