



# SmarTeam® - SolidWorks Integration (SWI)

The ENOVIA SmarTeam Integration to SolidWorks

## Highlights

**Bringing the benefits of collaborative Product Lifecycle Management (PLM) to the SolidWorks® desktop**

### Enriched User Experience

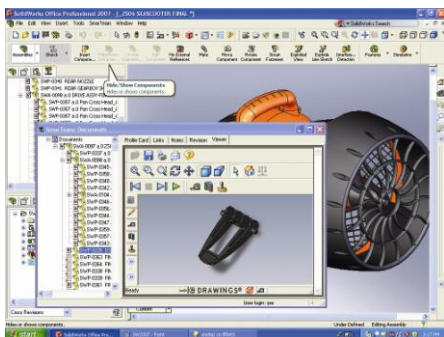
- Manage designs, assembly structures and related documents
- Save valuable search time with advanced search and retrieval capabilities
- Access, edit and revise SolidWorks documents while keeping track of revision lifecycle
- Reuse knowledge and quickly start a new project
- Work concurrently with shared workspaces in a collaborative design environment
- Publish eDrawings
- View, annotate and print multiple file formats

### Powerful Integration

- Ensures data integrity through automatic bidirectional drawing attribute mapping
- Maintains lifecycle-managed links and corresponding references for improved decision-making
- Secures legacy data

### Unmatched Solution

- Creates Engineering Bill of Materials (BOMs) directly from SolidWorks
- Works in a multi-CAD environment
- Enables rapid implementation through a predefined database structure and "SmarTeam Design Express" (SDE) Package
- Provides comprehensive SolidWorks support



### Bringing the benefits of collaborative PLM to the SolidWorks® desktop

A SolidWorks Certified Gold Product, the ENOVIA SmarTeam's Integration to SolidWorks brings the powerful Product Lifecycle Management benefits directly to the SolidWorks users' environment.

With this intuitive, Windows-based integration, SolidWorks users easily manage, create, edit and annotate vast amount of documents, including Microsoft Office, and drawings, without leaving the SolidWorks desktop. Eliminating the need to re-key data and the inefficiency of working on outdated designs, SmarTeam - SolidWorks Integration dramatically reduces errors and saves time, while ensuring revision accuracy and facilitating substantial design efficiencies.

### Enriched User Experience

#### Manage designs, assembly structures and related documents

SmarTeam - SolidWorks Integration links SolidWorks users into full Part and Assembly Management. Directly from within the embedded SmarTeam menu, and through secure SmarTeam vaults, users are able to seamlessly manage complex assembly hierarchy structures, including component parts, while maintaining dependencies during lifecycle operations.

#### Save valuable search time with advanced search and retrieval capabilities

SmarTeam - SolidWorks Integration provides accurate and quick access to product knowledge through advanced database and vault search techniques. Pre-defined and personalized queries enable users to retrieve documents that match the search criteria, thus saving time and money. Users can quickly search for the most commonly used fields, such as: Document Control No., Description, State and File Type, as well as other attributes including revision and catalog number. Users can also search key document properties or run a Full Text Search (FTS) within documents residing in the SmarTeam vaults.

#### Access, edit and revise SolidWorks documents while keeping track of revision lifecycle

SmarTeam-secured SolidWorks files are easily accessible from directly within the SolidWorks "Open" dialog box. Depending on their user, group, global role, and project-based authorization definitions, users can then edit and revise SolidWorks documents without worrying where they reside on the company network.

SmarTeam - SolidWorks Integration manages the files revisions seamlessly in the vault, enabling users to keep track of the revision lifecycle of all their design documents. Previous revisions of SolidWorks designs are maintained, ensuring accessibility to previous product versions. A log of each design modification is also maintained automatically.

#### Reuse knowledge and quickly start a new project

SmarTeam - SolidWorks Integration enables users to reuse existing design projects while maintaining project security value of structure and all corresponding relationships. Users can then modify the new design as necessary.

#### Work concurrently with shared workspaces in a collaborative design environment

SmarTeam - SolidWorks Integration facilitates concurrent engineering practices, by enhancing collaborative design through its innovative "shared workspace" capability. A team leader "checks out" an assembly or a project to a shared area. Authorized team members can work on separate parts of the same design and view the work being done by others. The latest changes are deployed seamlessly in that area, reducing the number of redundant revisions during design phase.

SmarTeam - SolidWorks Integration however, prevents simultaneous editing on the same file. A lifecycle status icon indicates whether an updated version of a part that may have been possibly modified by another user, is available to be loaded.

#### Publish eDrawings

Users can publish eDrawings and link them to their parent SolidWorks documents, including drawings, parts and assemblies. This capability maintains the integrity of drawings distributed among team members and recipients of eDrawings.

#### View, annotate and print multiple file formats

SmarTeam - SolidWorks Integration enables users to enjoy the powerful integrated ENOVIA SmarTeam viewer, which enables users to quickly browse through hundreds of formats, including 3D CAD parts & assemblies, 2D CAD drawings, scanned & raster documents, vector files, office documents and more, and view their native formats, without having to access the external application that created them. The integrated viewer



embeds the latest\* viewing technologies of SolidWorks eDrawings, Oracle AutoVue, and Dassault Systèmes 3D PLM for best file view fit.

**Powerful Integration**

**Ensures data integrity through automatic bi-directional drawing attribute mapping**

SmarTeam - SolidWorks Integration enables the effective management of all aspects of drawing control through the one-time keying of information. This includes automatic, deep, bi-directional synchronization of title block, revision block, and part and assembly information between SolidWorks documents and SmarTeam profile cards.

**Maintains lifecycle-managed links and corresponding references for improved decision-making**

SmarTeam – SolidWorks Integration maintains lifecycle-managed SolidWorks-specific links, including their direction to SolidWorks documents

All references of SolidWorks documents, e.g. configurations, parent-child relationship (“Where Used” and “Composed of”), and more - are maintained in the SmarTeam database, and viewed from the SmarTeam Document Manager Tree (DMT) embedded in the Integration. With the ability to view all dependencies immediately, users are empowered with informed decision-making, and are able to examine the impact of a part change on dependent assemblies.

**Secures legacy data**

The Bulk Loading tool enables users to automatically load vast amounts of legacy data into the database, and attach it to a selected project, in a rapid and transparent manner. In this manner corporate intellectual property is secured and managed, and is readily available to be leveraged in future projects.

**Unmatched Solution**

**Creates Engineering Bill of Materials (BOMs) directly from SolidWorks\*\***

Users can automatically create and update Engineering Bill of Materials (E-BOMs) directly from the CAD integration through

simple “save” or specific lifecycle operations such as “Release”, benefiting the entire organization for various purposes in very early stages.

SolidWorks users can compare Document trees with their corresponding Item trees, enabling them to take into consideration design changes, and their implications on the BOM Items. The integration of this ‘Design-to-Configure’ capability empowers collaborative engineering scenarios, and provides unique competitive value.

**Works in a multi-CAD environment**

ENOVIA SmarTeam creates a true multi-CAD environment, enabling SolidWorks users to deploy additional CAD Integrations, such as AutoCAD®, on their own desktop. Likewise, ENOVIA SmarTeam enables the enterprise to manage all CAD and related product data from a single collaborative PLM system, providing a common collaborative platform among diverse engineering teams, and for leveraging across the enterprise.

**Enables rapid implementation through a predefined database structure, and Express Package**

The predefined database structure of SmarTeam – Editor enables rapid implementation of the SolidWorks Integration. Moreover, the SolidWorks integration through the “SmarTeam Design Express (SDE) for Multi CAD” enables quick deployment using proven, pre-configured database model and implementation package along with recommended methodology guide that let users rapidly implement optimized collaborative design scenario. This is a first step for implementing a broader PLM program leveraging ENOVIA SmarTeam offering. Contact your local reseller for more information.

**Provides comprehensive SolidWorks support**

SmarTeam - SolidWorks Integration supports SolidWorks 2008. The integration will continue to support upcoming versions as they are released.

The SmarTeam – SolidWorks Integration is available as a sharable or Add-on product to some configuration as well as part of the SmarTeam – Multi CAD Configuration (SMC).

For more information, go to: [www.enovia.com](http://www.enovia.com) or [www.3ds.com](http://www.3ds.com)

This document is for informational purposes only and subject to change without notice.

© Dassault Systèmes, 2001- 2008 ENOVIA and SMARTEAM are registered trademarks of Dassault Systèmes or its subsidiaries in the US and/or other countries.

Microsoft is a registered trademark of Microsoft Corporation in the United States and/or other countries.

All other trademarks belong to their respective owners.

Rev. 09/08

Hardware Requirements	Software Requirements
<ul style="list-style-type: none"> <li>▪ Pentium IV 2.4 GHz or higher</li> <li>▪ Memory: 512 MB</li> <li>▪ Disk Space: 750 MB</li> <li>▪ Network connection to servers: TCP/IP</li> </ul>	<ul style="list-style-type: none"> <li>▪ Windows XP Professional SP2 x86</li> <li>▪ Runtime Environment: Microsoft .NET Framework 3.0</li> <li>▪ SmarTeam – Editor configuration V5R19, and its prerequisites</li> <li>▪ SolidWorks 2008</li> <li>▪ **For “Design-to-Configure” – SmarTeam – BOM V5R19</li> </ul>



\* Embeds Oracle AutoVue Solid Model Professional Viewer version 19.3, DS 3D PLM V5R19 and SolidWorks eDrawings 2008.  
 - Please refer to SmarTeam Hardware and Software Requirements document for additional information.  
 - Please refer to minimal SolidWorks requirements.