

Simulation Plastics 'Duplicate Project'

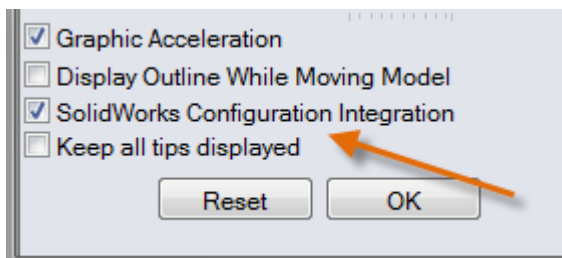
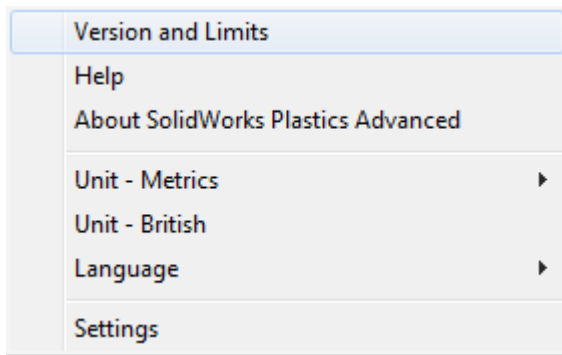
Presented By: **Robert Warren**

Duplicate Study -

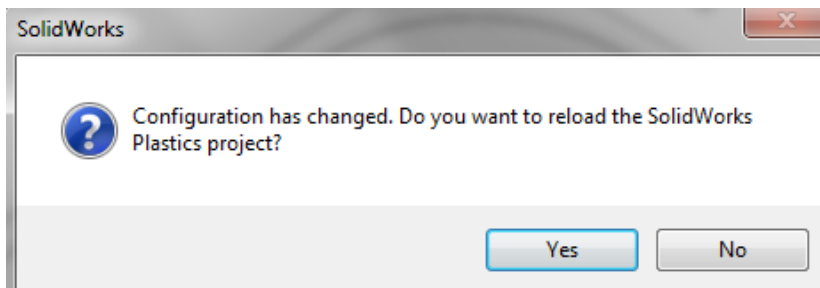
Allows a user to easily replicate a Plastics Project including mesh, input parameters and results.

Steps:

- Specify Configuration Link to Project. SolidWorks Plastics - Help - Settings - SolidWorks Configuration Integration.



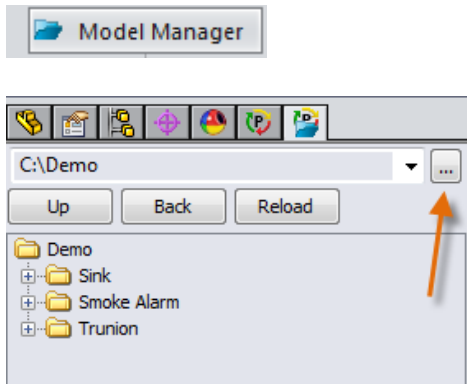
- To duplicate the Plastics Project Start by creating a new SolidWorks configuration of the part named your new project name.
- Copy the name of the project to the clipboard.
- Select No when asked if you want to reload the SolidWorks Plastics Project.



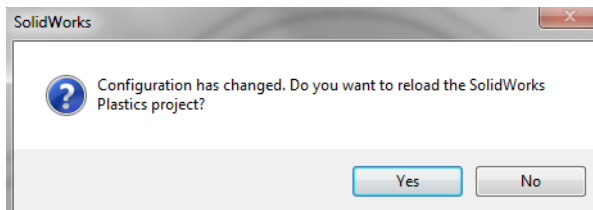
Simulation Plastics 'Duplicate Project'

Steps:

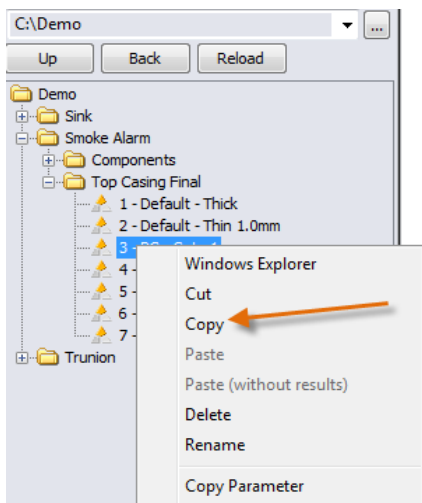
- Select the Model Manager. Browse to the appropriate location of the cad file. Expand the tree structure until the name of the Plastics project (corresponding to the original configuration name, usually 'Default') is seen.



- Right Mouse Button on the project you want to duplicate and choose 'copy'.
- Copy the name of the project to the clipboard.
- Select No when asked if you want to reload the SolidWorks Plastics Project.

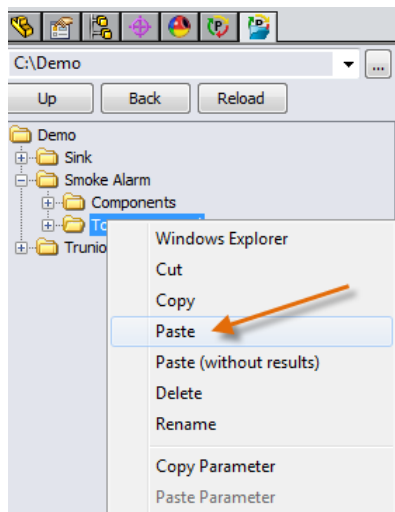


- Right Mouse Button on the Project you want to copy, select copy.

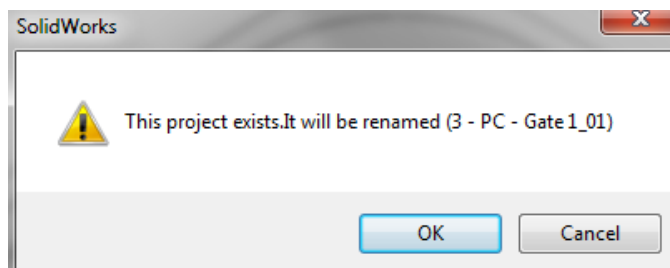


Steps:

- Right Mouse Button on the folder containing the project and select paste.



- You will be warned that the project already exists and it will be renamed. Select OK.



- You will now see an additional project with a # at the end of the parent project.
- Right Mouse Button the new child project and rename the project by pasting the name copied from the configuration.
- The file structure will now be updated. The newly created configuration will contain a clone of the setup and results of the original project. To switch back and forth between projects, switch to the appropriate SolidWorks Configuration and click 'Yes' when prompted to reload the project.

