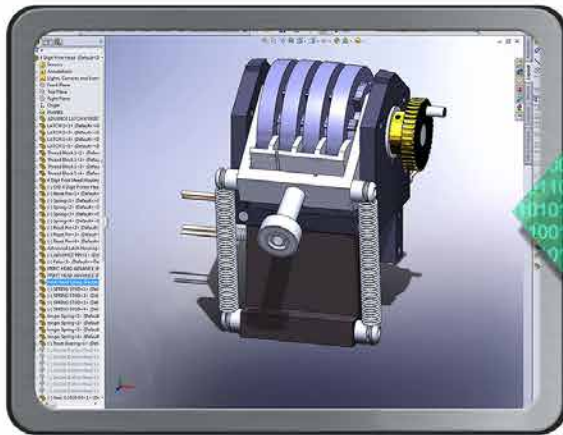




**“Real-Time BOM comparison,
2-Way data push, payback period of 6 months or less.”**

**SolidWorks
Enterprise PDM**



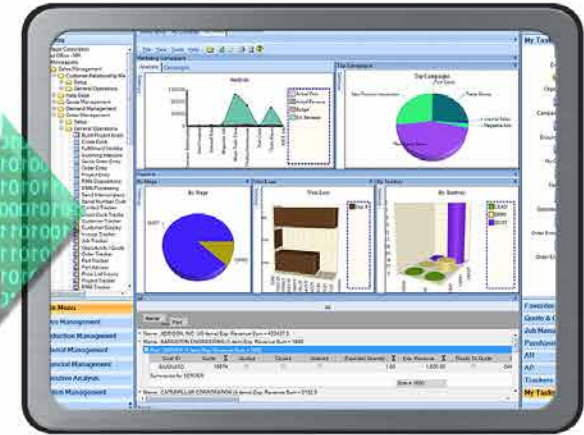
1. Engineer it

CADLink

No	Save	Part Number	Revision	Part Description
1	<input checked="" type="checkbox"/>	TM00750	000	SH100 - S - M - ASSEMBLY
1.1	<input checked="" type="checkbox"/>	TM00779	000	SI LED S ASSEMBLY
1.1.1	<input checked="" type="checkbox"/>	SDC00192	000	White Rebel LEDs, 20mm Tri-Star Base-7
1.1.2	<input checked="" type="checkbox"/>	SDC00198	000	Circle 22" Frosted TriLED Optic with Hdk
1.1.3	<input checked="" type="checkbox"/>	TM00959	000	SI L.E.D. PLASTIC COVER
1.1.4	<input checked="" type="checkbox"/>	TM00594	000	SI LED BASE #6
1.2	<input checked="" type="checkbox"/>	TM00755	000	SH100 - S - M - INSIDE COVER
1.2	<input checked="" type="checkbox"/>	SDC00095	000	SH100 - GAS SPRING
1.3.1	<input checked="" type="checkbox"/>	TM00751	000	GAS SPRING SIDE 2
1.3.2	<input checked="" type="checkbox"/>	TM00752	000	GAS SPRING SIDE 1
1.3.3	<input checked="" type="checkbox"/>	TM00750	000	GAS SPRING ROD
1.4	<input checked="" type="checkbox"/>	TM00748	000	SH100 - S - M - FRAME
1.5	<input checked="" type="checkbox"/>	TM00754	000	GAS STRUT STAND OFF
1.6	<input checked="" type="checkbox"/>	TM00754	000	SHV1 BALL STUD
1.7	<input checked="" type="checkbox"/>	TM00767	000	SH100 - S - M - 300 - 2550
1.8	<input checked="" type="checkbox"/>	TM00762	000	SH100 - S - M - 300 - 2550
1.9	<input checked="" type="checkbox"/>	TM00761	000	SH100 - S - M - 310 - 2550
1.10	<input checked="" type="checkbox"/>	TM00763	000	SH100 - S - M - NO CAMERA 34 SIDE PL

2. Sync the BOM

ERP System



3. Build it

**QBuild
CORPORATION**

210 Telson Road
Markham Ontario | L3R 1E6 CANADA
Ph: 1 (905) 479-7811 | Fx: 1 (905) 479-2636
Web: www.QBuildSoftware.com

Our Partners



Solution
Partner



EPICOR

APTEAN

ECI M1™

= exact

PLEX
THE MANUFACTURING CLOUD



Bill of Material Changes

Rev	Part Number	Revision	Part Description	Unit Qty	Users
0.00	TM00738	000	SA4100 - S - M - ASSEMBLY	1.0000	EA
1.1	TM00739	000	SI LED S ASSEMBLY	16.0000	EA
1.1	SC000192	000	WIRE, Robot LIDS, 20mm Tri-Star Base-705mg/700mA	1.0000	EA
1.1	SC000158	000	Camera ZDF Frontend Tri-LED Cyclic with Heater	1.0000	EA
1.1	TM00559	000	SI LED PLASTIC COVER	1.0000	EA
1.1	TM00554	000	SI LED BASE #5	1.0000	EA
1.2	TM00755	000	SA4100 - S - M - WSIDE COVER	2.0000	EA
1.3	SC000095	000	SA4100 - GAS SPRING	2.0000	EA
1.3	TM00751	000	GAS SPRING SIDE 2	1.0000	EA
1.3	TM00752	000	GAS SPRING SIDE 1	1.0000	EA
1.3	TM00750	000	GAS SPRING ROD	1.0000	EA
1.4	TM00745	000	SA4100 - S - M - FRAME	1.0000	EA
1.5	TM00746	000	GAS STRUT STAND OFF	4.0000	EA
1.6	TM00744	000	SPV11 BALL STUD	4.0000	EA
1.7	TM00767	000	SA4100 - S - M - 300 - 2550	1.0000	EA
1.8	TM00762	000	SA4100 - S - M - 350 - 2550	6.0000	EA
1.9	TM00761	000	SA4100 - S - M - 310 - 2550	1.0000	EA
1.10	TM00763	000	SA4100 - S - M - NO CAMERA 34 SIDE PLATE	1.0000	EA
1.11	TM00766	000	SA4100 - S - M - NO CAMERA 12 SIDE PLATE	1.0000	EA
1.12	TM00746	000	SA4100 - S - M - CAMERA 34 SIDE PLATE	1.0000	EA
1.13	TM00768	000	SA4100 - S - M - CAMERA 12 SIDE PLATE	1.0000	EA
1.14	TM00744	000	SA4100 - S - M - TOP COVER	2.0000	EA
1.15	TM00756	000	SA4100 - S - M - BUSHING	2.0000	EA
1.16	TM00773	000	NAME PLATE	1.0000	EA
1.17	TM00772	000	SA4100 - S - M - BOTTOM COVER	2.0000	EA
1.18	TM00769	000	SA4100 - S - M - DOWEL PIN	2.0000	EA
1.19	TM00749	000	SA4100 - S - M - BEARING PAD	9.0000	EA
1.20	RC00132	000	323 CLAMP PULL-ACTION	1.0000	EA
1.21	TM00740	000	SA4100 - S - M - SIDE COVER	2.0000	EA

Highly visual, intuitive user interface with indented exploded BOM view and thumbnail image. Colour highlighting lets you know which fields require your attention.

Resolve Discrepancies

SI4100 - GAS SPRING	Quantity
GAS SPRING SIDE 2	1000
GAS SPRING SIDE 1	1000
GAS SPRING ROD	1000

CAD Description : SI4100 - GAS SPRING
ERP Description : SSC9-8-090-255-600N
CADLink Description : SI4100 - GAS SPRING

Discrepancies between CAD and ERP are highlighted, allowing you to select or enter the correct data.

Operations

Seq	Type	Work Center	Process ID	Process Description	Qty Per Ass	Preid Std Factor	Preid Std
10	In House	WELD	WELD	Welding	1	Hours/Piece	2
20	In House	WELD	WELD	Welding	18	Hours/Piece	5
30	In House	SPIN	SPIN	Spinning	1	Hours/Piece	5
40	In House	SPOT	SPOT	Spot/Welder	5	Hours/Piece	1
50	In House	SUB	SUB	Subcontract	1	Hours/Piece	5
60	In House	TRISA	TRISA	Trask & Co	1	Hours/Piece	1
70	In House	TURN	TURN	Turning	1	Hours/Piece	1

Assigning ERP Operation is easy. Simply select work center from a drop-down list.

Access ERP Data

Part Group	Part Class	Part Type
Tooling	Hardware	Manufactured
Tooling	FD	Finished Goods
Tooling	WIP	Work In Progress
Tooling	RAW	Raw Material
Tooling	RMS	RMS
Tooling	SHEET	Sheet Metal
Tooling	TOOLS	Tooling
Tooling	WIP	WIP Pats

CADLink's direct integration allows you to access ERP data such as Product Group, Part Class, and Raw Material Part Data directly from the CADLink interface.

Features

- Real-time, direct, two-way link with ERP
- Automated, single-step BOM push
- View BOM change summary
- Push Revision to ERP and CAD
- Export Excel and PDF files
- Notification for errors and missing fields

Benefits

- Eliminate manual data entry
- Cut design cost
- Improve data consistency
- Improve information flow
- Increase data accuracy
- Reduce cycle time



Request a Demo Today!
www.QBuildSoftware.com
info@qbuildsoftware.com



“ Allow engineering teams to focus on what they do BEST: **Engineering!** ”