

SOLIDWORKS WORLD 2015

FEBRUARY 8-11

PHOENIX CONVENTION CENTER | PHOENIX, AZ

Successfully Prepare For Your EPDM File/Data Migration

Jeff Barker

Senior PLM Consultant

InFlow Technology



Introduction

My Background...

- Senior PLM Consultant for InFlow Technology (a division of Computer Aided Technology Inc., Headquartered in Buffalo Grove, IL)
 - InFlow Technology
 - Focused exclusively on process related solutions including PDM and PLM
 - 200+ Active PDM/PLM customers
 - Full service solutions provider
 - Project Planning
 - Implementation/Migration Services
 - User/Admin Training
 - Support
 - System Customization
- 11 years of PDM/PLM experience
- Dell BPI (Business Process Improvement) Green Belt certification

Purpose of this presentation

An overview of best practices and pitfalls of migrations will be given along with real world examples to help prepare for a migration into EPDM. Asking the right questions and discovering issues early on is key to a migration's success.

Successfully Prepare For Your EPDM File/Data Migration

Terms

- Metadata – additional information about a file or folder maintained on a datacard in EPDM
- Backfill – adding metadata to a file through its custom properties or secondary source
- Versions – Snapshots in time of a file
- Revision – The approved version of a file
- Version/Revision Stacking – Taking multiple copies (versions/revisions, i.e. 123_RevA.slddrw, 123_RevB.slddrw) of a and renaming them to a single unique file in EPDM.

Successfully Prepare For Your EPDM File/Data Migration

What Is the Intention?

Know Your Source – Common Issues

Know Your Destination

How Do You Get There?

How Do You Know You're There?

Successfully Prepare For Your EPDM File/Data Migration

What Is the Intention?

- Reference only
 - For conversion purposes
- Source structure versus New structure
- Legacy process versus New process
- History or Latest version only
- Cleanse – Fix revisions, Remove duplicate files, Fix missing references, add or update metadata

Successfully Prepare For Your EPDM File/Data Migration

What Is the Intention?

Know Your Source – Common Issues

Know Your Destination

How Do You Get There?

How Do You Know You're There?

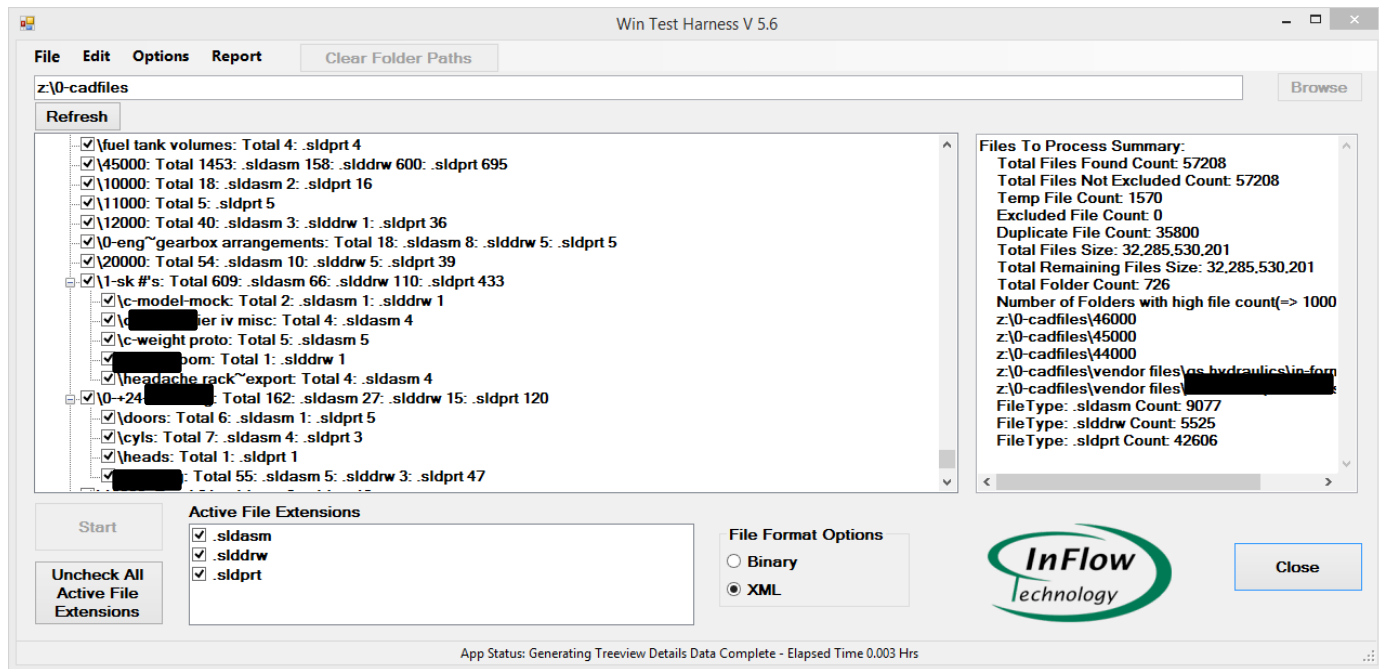
Successfully Prepare For Your EPDM File/Data Migration

Know Your Source - Network Drive Common Issues

- Drag and drop will not update properties in Drawings if mapped from a model \$PRPSHEET
- Drag and drop may not update references
- Duplicate files
- File reference issues
- Folders with large file/folder counts
- Revisions
- Mapping metadata
- Workflow state mapping

Successfully Prepare For Your EPDM File/Data Migration

Know Your Source - Network Drive Common Issues – Duplicate Files, Counts, Size



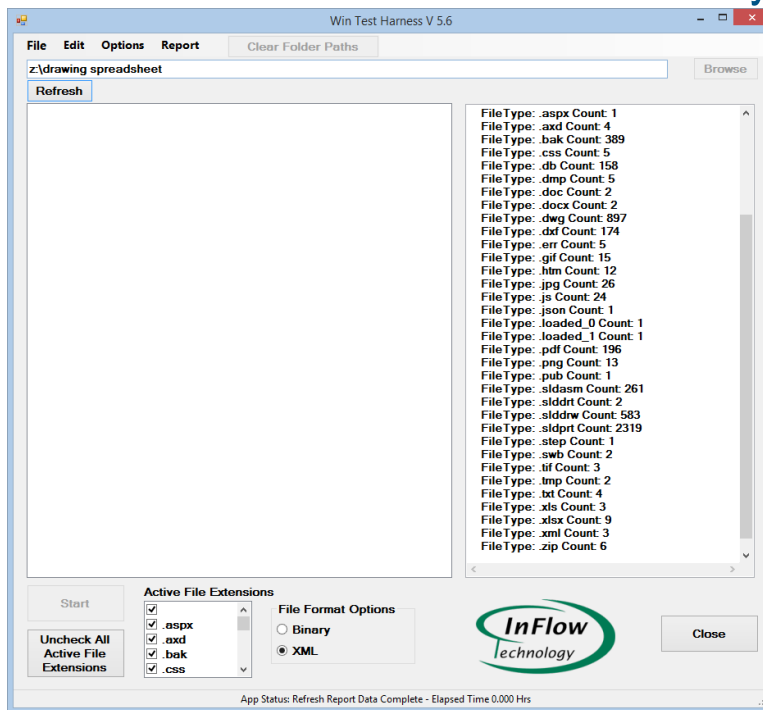
Successfully Prepare For Your EPDM File/Data Migration

Know Your Source - Network Drive Common Issues – Missing References

| ParentFileTo ProcessId | ParentFilePath | ParentFileName | ParentConfigName | ChildFileTo ProcessId | ChildFilePath | ChildFileName | IsChildFound |
|---------------------------|---------------------|-----------------|------------------|--------------------------|--|---|--------------|
| 6852 | z:\0-cadfiles\42000 | str link.sldasm | default | -1 | c:\documents and settings\bob.t\desktop\solidworks files | tube.sldprt | FALSE |
| 7595 | z:\0-cadfiles\43000 | 43287a.sldasm | default | -1 | z:\0-cadfiles\43000 | 43290a.sldprt | FALSE |
| 7595 | z:\0-cadfiles\43000 | 43287a.sldasm | default | -1 | z:\0-cadfiles\12000 | 12021c.sldprt | FALSE |
| 7762 | z:\0-cadfiles\43000 | 43369.sldasm | default | -1 | z:\hyd fittings | 6_xhb3-s.sldprt | FALSE |
| 8210 | z:\0-cadfiles\43000 | 43599a.sldasm | default | -1 | z:\0-cadfiles\43000 | 43135a.sldprt | FALSE |
| 8210 | z:\0-cadfiles\43000 | 43599a.sldasm | default | -1 | z:\0-cadfiles\43000 | 43131a.sldprt | FALSE |
| 9558 | z:\0-cadfiles\44000 | 44223a.sldasm | default | -1 | c:\documents and settings\bob.t\000\desktop | part1.sldprt | FALSE |
| 9894 | z:\0-cadfiles\44000 | 44366a.sldasm | default | -1 | z:\0-cadfiles\50000 | 53765b.sldasm | FALSE |
| 9894 | z:\0-cadfiles\44000 | 44366a.sldasm | default | -1 | z:\0-cadfiles\50000 | 53766b.sldasm | FALSE |
| 10555 | z:\0-cadfiles\44000 | 44593.sldasm | default | -1 | z:\hyd fittings | 17460.sldprt | FALSE |
| 12223 | z:\0-cadfiles\45000 | 45274.2.sldasm | default | -1 | z:\hyd fittings | 4_c5olo-s.sldprt | FALSE |
| 12223 | z:\0-cadfiles\45000 | 45274.2.sldasm | door closed | -1 | z:\hyd fittings | 4_c5olo-s.sldprt | FALSE |
| 12227 | z:\0-cadfiles\45000 | 45274.sldasm | default | -1 | z:\hyd fittings | 4_c5olo-s.sldprt | FALSE |
| 12227 | z:\0-cadfiles\45000 | 45274.sldasm | door closed | -1 | z:\hyd fittings | 4_c5olo-s.sldprt | FALSE |
| 12227 | z:\0-cadfiles\45000 | 45274.sldasm | door open | -1 | z:\hyd fittings | 4_c5olo-s.sldprt | FALSE |
| 12227 | z:\0-cadfiles\45000 | 45274.sldasm | all | -1 | z:\hyd fittings | 4_c5olo-s.sldprt | FALSE |
| 12404 | z:\0-cadfiles\45000 | 45343.sldasm | default | -1 | c:\users\joe\appdata\local\temp\swx4820\vc\45343 | part3*45343.sldprt | FALSE |
| 12404 | z:\0-cadfiles\45000 | 45343.sldasm | default | -1 | z:\hyd fittings | o_lok_male_stud_run_tee_6_6_6s4omlos.sldprt | FALSE |
| 13428 | z:\0-cadfiles\45000 | 45932.sldasm | default | -1 | z:\solidworks\shared data\solidworks toolbox\brower\ansi inch\bolts ar | socket head cap screw_ai.sldprt | FALSE |
| 13428 | z:\0-cadfiles\45000 | 45932.sldasm | door down | -1 | z:\solidworks\shared data\solidworks toolbox\brower\ansi inch\bolts ar | socket head cap screw_ai.sldprt | FALSE |
| 13565 | z:\0-cadfiles\46000 | 46000.sldasm | default | -1 | c:\users\joe\desktop | junk eng loc.sldprt | FALSE |
| 13565 | z:\0-cadfiles\46000 | 46000.sldasm | weld 1 | -1 | c:\users\joe\desktop | junk eng loc.sldprt | FALSE |
| 13783 | z:\0-cadfiles\46000 | 46078.1.sldasm | default | -1 | z:\hyd fittings | 16_welo_wInl-s.sldasm | FALSE |
| 13783 | z:\0-cadfiles\46000 | 46078.1.sldasm | orig | -1 | z:\hyd fittings | 16_welo_wInl-s.sldasm | FALSE |
| 13783 | z:\0-cadfiles\46000 | 46078.1.sldasm | modified 1 | -1 | z:\hyd fittings | 16_welo_wInl-s.sldasm | FALSE |
| 13944 | z:\0-cadfiles\46000 | 46151.sldasm | default | -1 | z:\hyd fittings | 12_c5ox-s.sldprt | FALSE |
| 13944 | z:\0-cadfiles\46000 | 46151.sldasm | default | -1 | z:\hyd fittings | 16_c5ox-s.sldprt | FALSE |

Successfully Prepare For Your EPDM File/Data Migration

Know Your Source - Network Drive Common Issues – File types



Successfully Prepare For Your EPDM File/Data Migration

Know Your Source - Workgroup Common Issues

- Issues with Revision schemas
- Issues with Lifecycle states
- Issues with Toolbox components
- Understanding the “real” folder structure
- Folders with large file counts
- Workgroup properties versus custom properties
- Workflow state mapping

Successfully Prepare For Your EPDM File/Data Migration

Know Your Source - Workgroup Common Issues – Revisions – schema must match EPDM

The screenshot displays the 'Revision Scheme' configuration window in the SOLIDWORKS Workgroup PDM 2015 VaultAdmin application. The window is divided into several tabs: Lifecycle, Properties, Standard Libraries, and Triggers. The 'Revision Scheme' tab is active, showing the 'Revision Table' and 'Projects' sub-tabs. The 'Revision Table' sub-tab is selected, displaying the 'Revision information' section. This section includes fields for 'Primary', 'Secondary', and 'Tertiary' revisions, each with 'From' and 'To' input boxes and a 'Separator' field. The 'Working copy' field is also present. Below these fields are radio buttons for 'Range' and 'Listing' selection. The 'Primary' section has a 'Listing' radio button selected, and a list of revisions (REV-A through REV-S) is displayed in a scrollable area. The 'Secondary' and 'Tertiary' sections have 'Range' radio buttons selected. At the bottom of the window, there are checkboxes for 'Sequential revisioning' and 'Last revision type optional', both of which are currently unchecked. The 'Logged in as' field shows 'pdmwadmin'. The window includes standard 'OK', 'Cancel', 'Apply', and 'Help' buttons.

SOLIDWORKS Workgroup PDM 2015 VaultAdmin

Revision Scheme

Revision information

Primary Secondary Tertiary Working copy

From: To: Separator 01 99

☐ Range ☒ Range ☐ Range

☒ Listing ☐ Listing ☐ Listing

REV-A REV-B REV-C REV-D REV-E REV-F REV-G REV-H REV-I REV-J REV-K REV-L REV-M REV-N REV-O REV-P REV-Q REV-R REV-S

☐ Sequential revisioning ☐ Last revision type optional

Logged in as: pdmwadmin

OK Cancel Apply Help

Successfully Prepare For Your EPDM File/Data Migration

Know Your Source - Workgroup Common Issues – Revisions – Primary in wrong position

The screenshot shows the 'Revision Scheme' tab in the 'SOLIDWORKS Workgroup PDM 2015 VaultAdmin' application. The 'Revision information' section is active, showing fields for 'Primary', 'Secondary', and 'Tertiary' revisions. The 'Primary' revision is set to 'From: 01' and 'To: 99'. The 'Secondary' revision is set to 'From: ' and 'To: '. The 'Tertiary' revision is set to 'From: ' and 'To: '. The 'Working copy' checkbox is checked. The 'Range' radio button is selected for all three revision types. The 'Sequential revisioning' checkbox is unchecked. The 'Last revision type optional' checkbox is unchecked. The 'Logged in as: pdmadmin' is shown at the bottom left. The 'OK', 'Cancel', 'Apply', and 'Help' buttons are at the bottom right.

| Revision Type | From | To | Range | Listing |
|---------------|------|----|----------------------------------|----------------------------------|
| Primary | 01 | 99 | <input checked="" type="radio"/> | <input type="radio"/> |
| Secondary | | | <input type="radio"/> | <input checked="" type="radio"/> |
| Tertiary | | | <input type="radio"/> | <input type="radio"/> |

Working copy: ☒

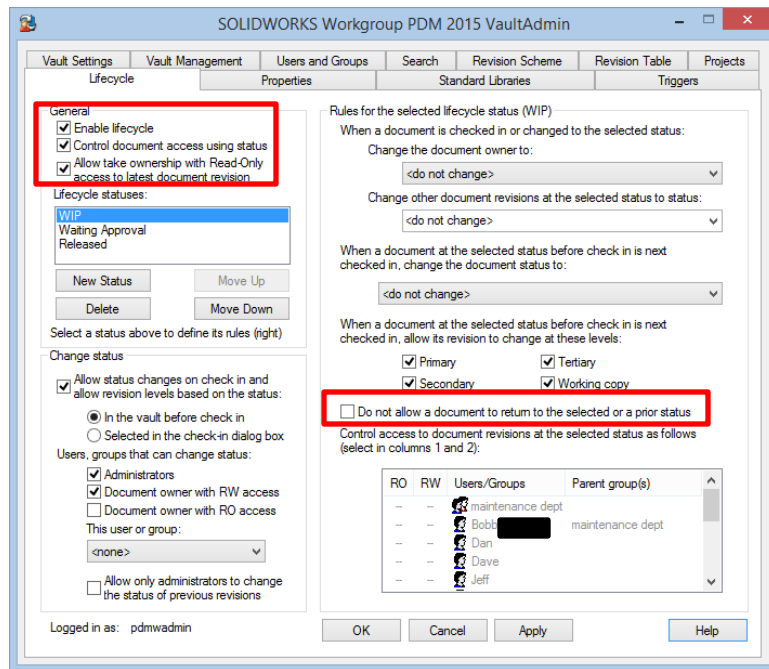
Sequential revisioning: ☐ Last revision type optional: ☐

Logged in as: pdmadmin

OK Cancel Apply Help

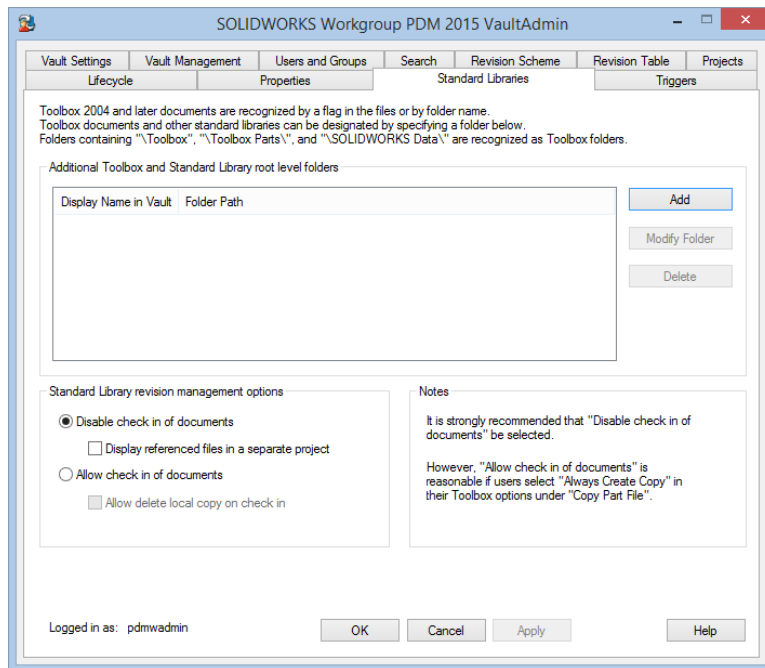
Successfully Prepare For Your EPDM File/Data Migration

Know Your Source - Workgroup Common Issues – Lifecycle – Not set up or set up improperly



Successfully Prepare For Your EPDM File/Data Migration

Know Your Source - Workgroup Common Issues – Toolbox/"Non-revisioned" files are not recognized in the Workgroup migration tool



Successfully Prepare For Your EPDM File/Data Migration

Know Your Source - Other PDM/PLM Common Issues

Autodesk Vault, DBWorks, Windchill, Agile, Product Center, BaanPDM, SmartTeam

- Revision schema mismatch or Nonexistent
- Lack of workflow or Undisciplined workflow
- Files versus Items
- Workspaces versus Folder structure
- Lack of folder structure
- Replicated databases – requires merge

Successfully Prepare For Your EPDM File/Data Migration

What Is the Intention?

Know Your Source – Common Issues

Know Your Destination

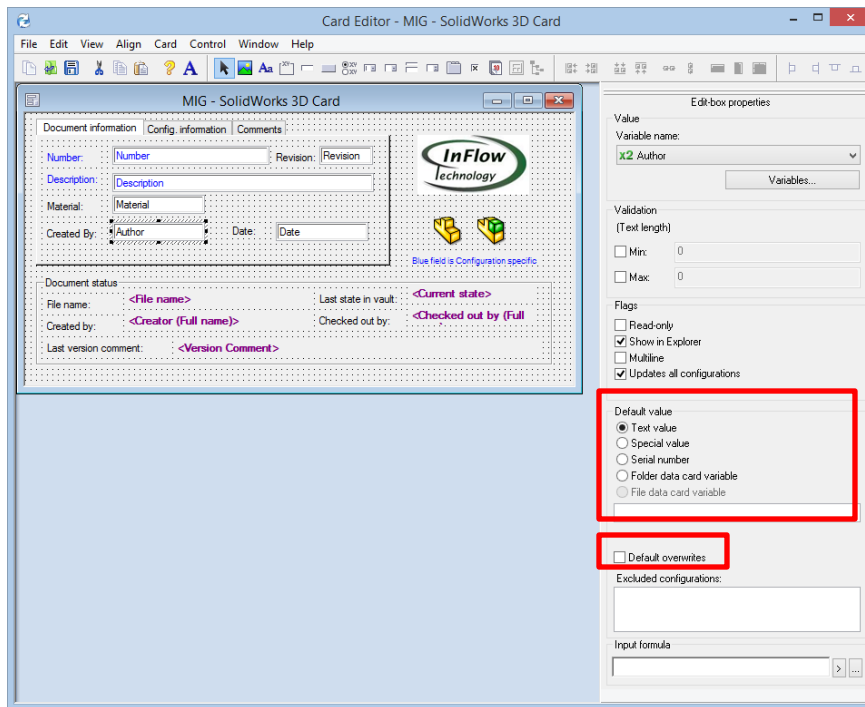
How Do You Get There?

How Do You Know You're There?

Successfully Prepare For Your EPDM File/Data Migration

Know Your Destination – EPDM Environment Considerations

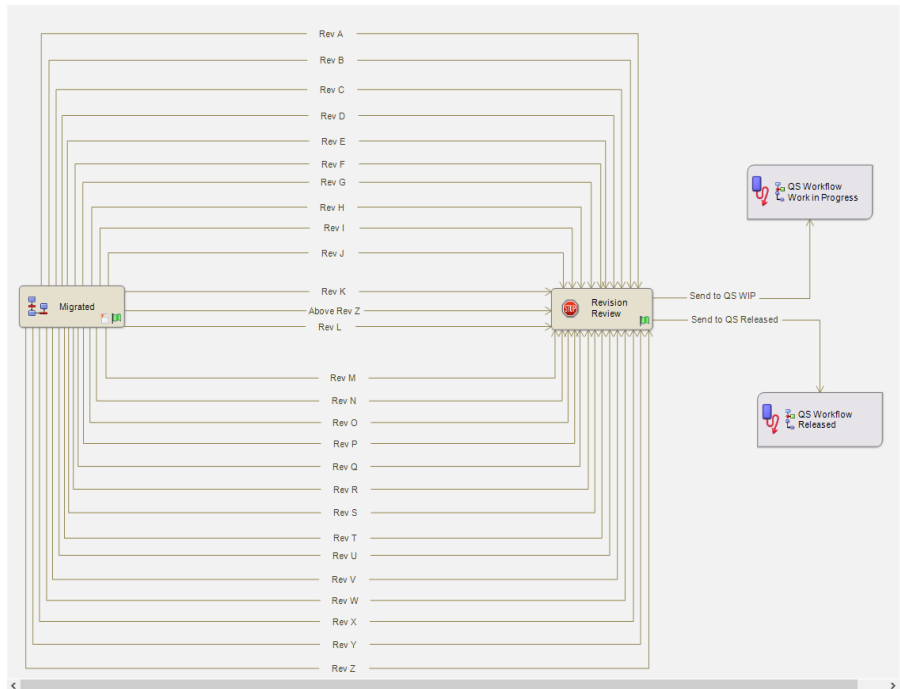
- Migration Datacards
 - Do not use dropdown fields
 - Deselect “Default Overwrites”
 - Remove “Default Values”



Successfully Prepare For Your EPDM File/Data Migration

Know Your Destination – EPDM Environment Considerations

- Workflow and Revisions
 - Match Revision schemas
 - Data Migration workflow might be required to set revisions
 - Set workflow states



Successfully Prepare For Your EPDM File/Data Migration

What Is the Intention?

Know Your Source – Common Issues

Know Your Destination

How Do You Get There?

How Do You Know You're There?

Successfully Prepare For Your EPDM File/Data Migration

How Do You Get There?

- Drag and Drop
- Utilize Workgroup migration utility provided by SOLIDWORKS (VARs only)
- Utilize the XML Import utility provided by SOLIDWORKS (VARs only)
- Utilize EXALEAD One Part (identify duplicate parts)
- Develop your own migration tools

IMPORTANT: Any method that you use you should do thorough testing and validation prior to the production migration.

Successfully Prepare For Your EPDM File/Data Migration

What Is the Intention?

Know Your Source – Common Issues

Know Your Destination

How Do You Get There?

How Do You Know You're There?

Successfully Prepare For Your EPDM File/Data Migration

How Do You Know You're There?

- Review Log Files (if available)
- Compare files to be migrated to files migrated lists
- Compare the revisions and history of files between your source and SolidWorks Enterprise PDM.
- Open a small sample of the data (assembly, part, and drawing files) and run it through each transition.
- Spot check by multiple individuals and document

Successfully Prepare For Your EPDM File/Data Migration

Final tips – If anything remember this...

- Build a plan around what you know about your source files/data to mitigate know issues
 - Timing
 - New vault versus Existing production vault
 - Where the source files are located
- Consider the migration method that you will use to achieve your goals
- Setup an EPDM environment that is migration centric versus production centric
 - Utilize out of the box EPDM functionality to assist in cleansing your source data
- Have a robust verification process to confirm your success

Q&A

Jeff Barker

Senior PLM Consultant

InFlow Technology

jeff.barker@inflow-tech.com

920-268-1707

CATI and InFlow Presentation Schedule

Monday February, 9th

- **Discovering and Understanding SOLIDWORKS Dismissed Messages** - 1:30pm-2:30pm - Room North 229, Bryan Pawlak and Phil Whitaker
- **SOLIDWORKS Composer: As Easy as Building with Legos** - 1:30pm-2:30pm – Room North-225B, Brian Reel
- **Achieving Extreme SOLIDWORKS Performance: Hardware/Configuration** - 2:45-3:45pm - Room North-121A-C, Adrian Fanjoy and Josh Altergott
- **Configuring SOLIDWORKS Toolbox** - 2:45-3:45pm - Room North-124A/B, John Van Engen
- **Successfully Prepare for Your EPDM File/Data Migration** - 2:45-3:45pm - Room North-120B-C, Jeff Barker

Tuesday February, 10th

- **SOLIDWORKS Duct Tape & Bailing Wire: Creative Solutions to Everyday Problems**- 1:30-2:30pm - Room North 129A/B, Josh Altergott and Adrian Fanjoy
- **Drawings: Setup of Templates and Sheet Formats**- 1:30-2:30pm - Room North-221, Jim Krivoshein
- **EPDM Web: Implementing and Configuring** - 1:30pm-2:30pm - Room North-121A-C, Justin Webster
- **How to Build and Maintain Effective Design Tables** - 2:45-3:45pm - Room North-120D, Josh Altergott
- **DriveWorksXpress Essentials Hands-On Lab** – 4:30pm-6:00pm - Room North-227C, Ryan Dally

Wednesday February, 11th

- **Achieving Extreme SOLIDWORKS Performance: Modeling Methodology** - 2:45-3:45pm - Room North-120D, Josh Altergott, and Adrian Fanjoy
- **Sharing Assemblies—Without Giving It All Away**- 2:45-3:45pm - Room North-221, Jim Krivoshein

For a copy of all CATI and InFlow presentations please go to <http://www.cati.com/sww2015>

